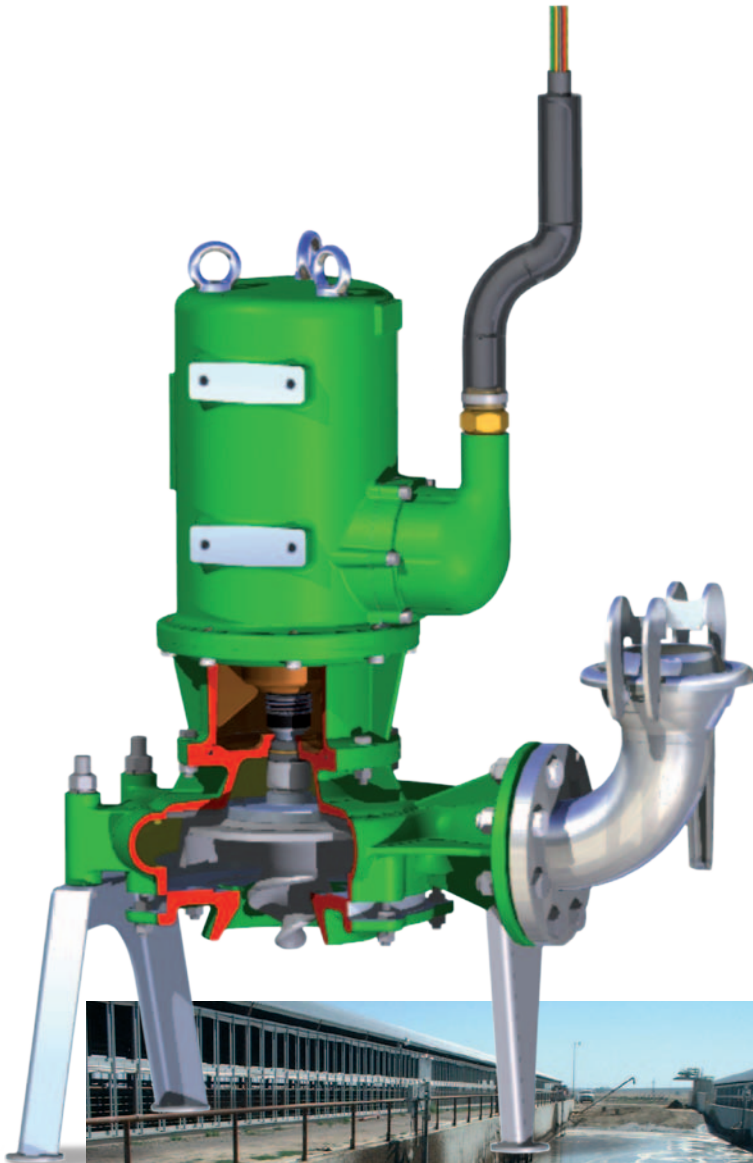




# BAUER

*FOR A GREEN WORLD*

## Submersible Motor Pump MAGNUM CSP



**The NEW BAUER CSP pump impresses with singular performance, versatile application and long lifespan.**

Flow rate of 80 m<sup>3</sup>/h at a discharge head of 13 m and drive speed of 1450 U/min

Outstanding cutting performance

New design of cutting device made of high quality chrome-steel

Submersible rotary motor 4.0 – 5.5 – 7.5 kW with insulation class H (optional)

High efficiency – efficiency class 1

Temperature control for application in biogas plants

Additional security thanks to leakage sensors (optional)

30% higher efficiency achieved than at competitor models



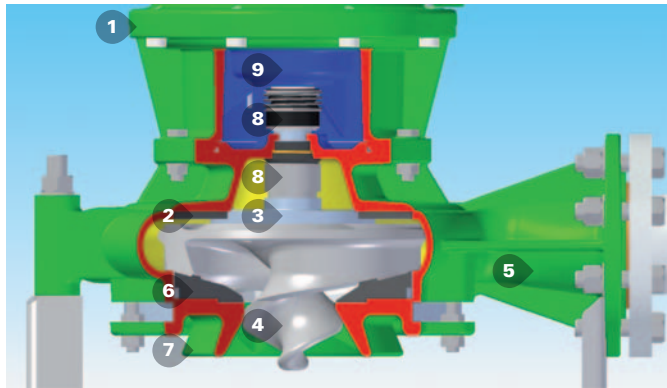


**BAUER**

FOR A GREEN WORLD

# Submersible Motor Pump MAGNUM CSP

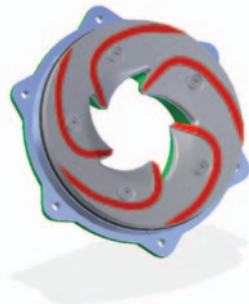
## The unique design of the MAGNUM CSP



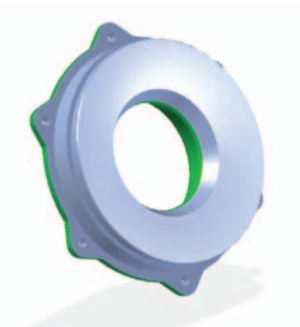
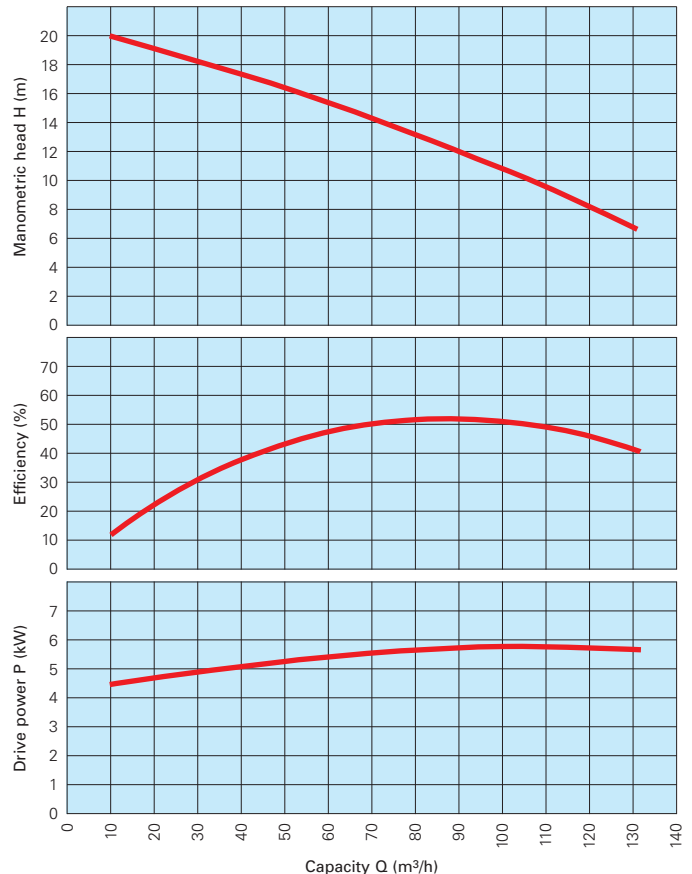
- |                     |                      |
|---------------------|----------------------|
| 1 Submersible motor | 6 Cutting device     |
| 2 Wear disc         | 7 Suction bell       |
| 3 Flange disc       | 8 Mechanical sealing |
| 4 Impeller          | 9 Oil collection     |
| 5 Spiral housing    |                      |

### Long lifespan

The new cutting device of the MAGNUM CSP is adjustable and easy to replace. The use of high quality chrome-steel clearly improves the lifespan of the pump.



## Characteristic curves MAGNUM CSP – 5.5 kW



### Higher flow rate

The new designed suction bell of the MAGNUM CSP accelerates the flow of the media.

## Submersible Motor Pump MAGNUM CSP with cutting device

Model	Discharge m³/h	Discharge head m	max. drive power kW	max. Ampere	drive speed min <sup>-1</sup>	Delivery connection mm
CSP 4	20 – 100	12.3 – 5.9	4.0	8.1	1450	DN 80
CSP 5.5	20 – 120	19.2 – 8.2	5.5	10.7	1450	DN 80
CSP 7.5	20 – 120	19.2 – 8.2	7.5	14.9	1445	DN 80

The CSP 7.5/50 Hz has the same hydraulic values as the CSP 5.5 (but with larger cutting reserves)

## Submersible Motor Pump MAGNUM ESP without cutting device

Modell	Discharge m³/h	Discharge head m	max. drive power kW	max. Ampere	drive speed min <sup>-1</sup>	Delivery connection mm
ESP 4	20 – 100	13.0 – 7.0	4.0	8.1	1450	DN 80
ESP 5.5	20 – 120	20.0 – 9.8	5.5	10.7	1450	DN 80

Your dealer:

Röhren- und Pumpenwerk BAUER Ges.m.b.H.  
8570 Voitsberg, Austria  
Phone +43 3142 200-0  
Fax +43 3142 200-320 / -340  
sales@bauer-at.com  
www.bauer-at.com

A **BAUER Group** company

